



# University of Portsmouth



**Dr David L Ndzi**

Principal Lecturer and International  
Coordinator

**Ms Kathryn Land**

International Officer



# Location

- Historic waterfront location on the south coast of England
- Vibrant student city
- 90 minutes to London & major airports
- Ferries to France and Spain
- City centre campus





# The University of Portsmouth

- Established in 1869
- First degree awarded in 1900
- Over 22,800 students: 4,800 from over 100 countries





# Our courses

- 27 academic departments across five faculties
- Over 500 degree programmes
- Extensive range of world leading and internationally excellent research
- Foundation pathways





## Degree programmes in five faculties

- Portsmouth Business School
- Creative and Cultural Industries
- Humanities
- Science
- **Technology**

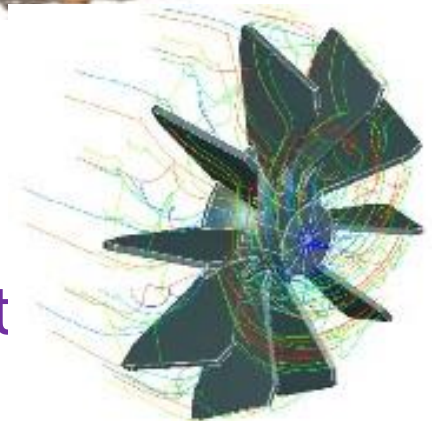




# The Faculty of Technology

The Faculty of Technology offers a varied portfolio of courses in a wide range of technology related disciplines including

- Computing
- Civil Engineering
- Electronic and Computer Engineering
- Mechanical Engineering
- Manufacturing Engineering
- Mathematics
- Logistics and Supply Chain Management





# T E C H

Civil Engineering & Surveying



- Civil engineering
- Construction engineering
- Property development
- Quantity Surveying

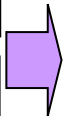
School of Computing



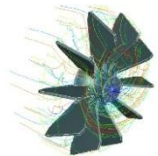
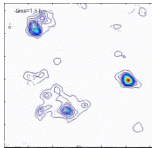
- Computer Science
- Information Systems
- E-commerce technologies
- Investigating computer crime

School of Engineering

Regional Centre for Manufacturing Industries



- Electronics
- Computer Networks and Security
- Computer Systems Engineering
- Communication
- Mechanical & Manufacturing Engineering
- Product Design
- Materials (including aeronautical)



Mathematics



- Mathematics
- Mathematical Applications for Finance
- Logistics

Institute of Cosmology & Gravitation



- Research

Partnership Programme



- Coordinates programmes for students from industry



## Awards

- Undergraduate Degrees
  - BSc(Hons), BEng(Hons) and MEng(Hons)
- Postgraduate Taught Degrees
  - Masters - MSc
  - Distance/on-line courses
- Postgraduate Research Degrees
  - MRes\*
  - MPhil
  - PhD

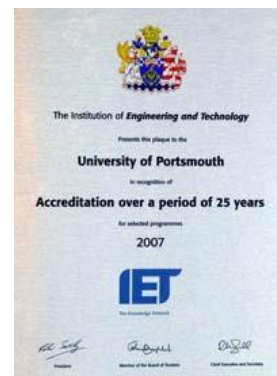






## Professional Accreditation

- Programmes accredited predominantly to Chartered Engineering (CEng) Route by the following institutions:
  - Institution of Engineering & Technology (IET)
  - Institution of Mechanical Engineers (IMechE)
  - Institution of Civil Engineers (ICE)
  - Institution of Structural Engineers (IStructE)
  - British Computer Society (BCS)
  - Institute of Highway Engineers (IHE)
  - Royal Institution of Chartered Surveyors (RICS)
  - Institution of Engineering Designers - IED

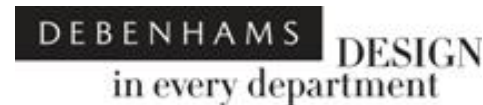




Balfour Beatty



ATKINS





## Recent Faculty investments

- Teaching (committed):
  - Engineering Laboratories (Modernisation) £2M
  - Networking laboratory £0.5M
- Teaching (planned):
  - Faculty Learning Centre
  - Continuing Professional Development Centre
  - Specialist Computing Laboratories £1M
- Research (committed)
  - Research Excellence Framework £1.5M
- Modernisation of Equipment (90%)



## Faculty

- Significant investment ( $\approx$  £1 million) in computer network teaching facilities
- Graduates with one of the highest starting salary





## Faculty

- Successful development of Petroleum Engineering programme with Saudi ARAMCO
- Expansion of Petroleum and renewable energy laboratory



ARAMCO Delegation visits Portsmouth



## Faculty

- Students applying what they learn in real systems: our Formula Student team
  - Design, build and race their own car



Portsmouth's Formula Student Team



## Faculty

- Centre of Excellence in Manufacturing with a wide range of rapid prototyping machines
- Home to the only UK's European Space Agency accredited training centre for spacecraft engineers.
- Accredits engineering programmes for UK Navy and Army
- Contract to run engineering programmes for Oman military
- Provides pre-sessional programmes (English Language and continual language support)



## Research in Technology

- Applied Maths (ICG)
  - 100% of research in applied mathematics is rated as international standing in the 2008 RAE
- Mechanical Engineering
  - Regional Centre for Manufacturing Engineering
  - 85% of all research is rated as international standing in the 2008 RAE
- Computing and Electronic Engineering
  - UK only European Space Agency accredited training centre
  - 65% of all research is rated as international standing in the 2008 RAE
- Work with Industry
  - Involved in major Knowledge Transfer research based activity
  - Focussing closely on supporting the needs of industry
  - Attracting significant government and privately funded **applied research**





## Research Areas

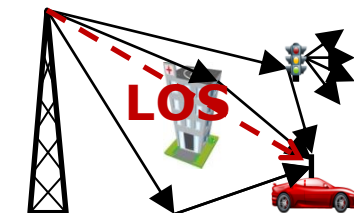
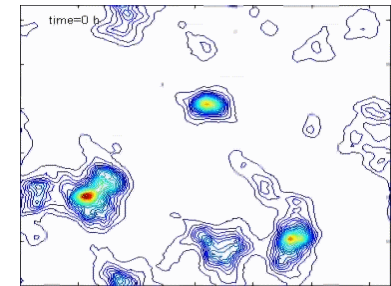
- Applied Maths – Cosmology and Gravitation
  - Early universe – inflation (period of accelerated expansion)
  - Dark Energy – (effectively gravitationally repulsive)
  - Large Scale Structure – (survey of the universe)
  - Galaxy Evolution
- Logistics and Operational Research
  - Distance metric optimisation
  - Goal programming theory and algorithms
  - Multiple objective evolutionary algorithms (MOEAs)
  - Transport and vehicle routing





## Research Areas

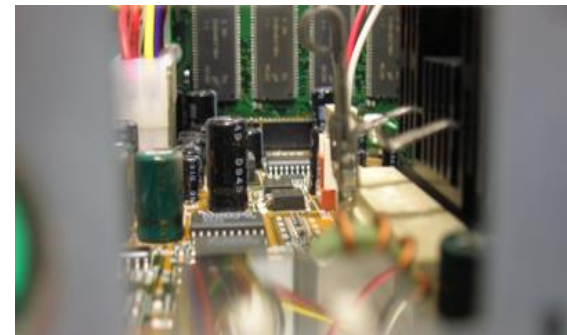
- Computing and Communications
  - Computational Intelligence; data mining, machine learning, adaptive systems and bioinformatics.
  - Healthcare Modelling and Informatics
  - Pervasive Computing- embedded, distributed
  - Systems and Information Systems; system security, digital forensics and e-commerce systems
  - Wireless communications: wireless sensor networks, broadband communications, environmental monitoring and control, internet of everything
  - Wireless Technology in agriculture





## Research Areas

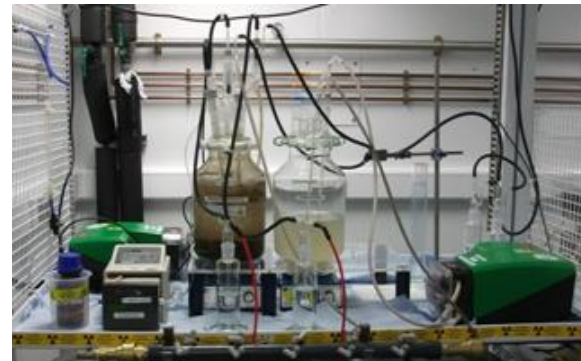
- Engineering and Manufacturing
  - Advanced Polymers and Composites
  - Aerospace Materials And Structures
  - Biomechanical Engineering
  - Manufacturing Engineering
  - Systems Engineering – automation
  - Thermo-Fluid, Petroleum and Energy Engineering





## Research Areas

- Civil Engineering and Environmental Technologies
  - Construction Management and Surveying
  - Environmental Technology and Management
  - Structures, Materials and Geotechnics
  - Land rehabilitation

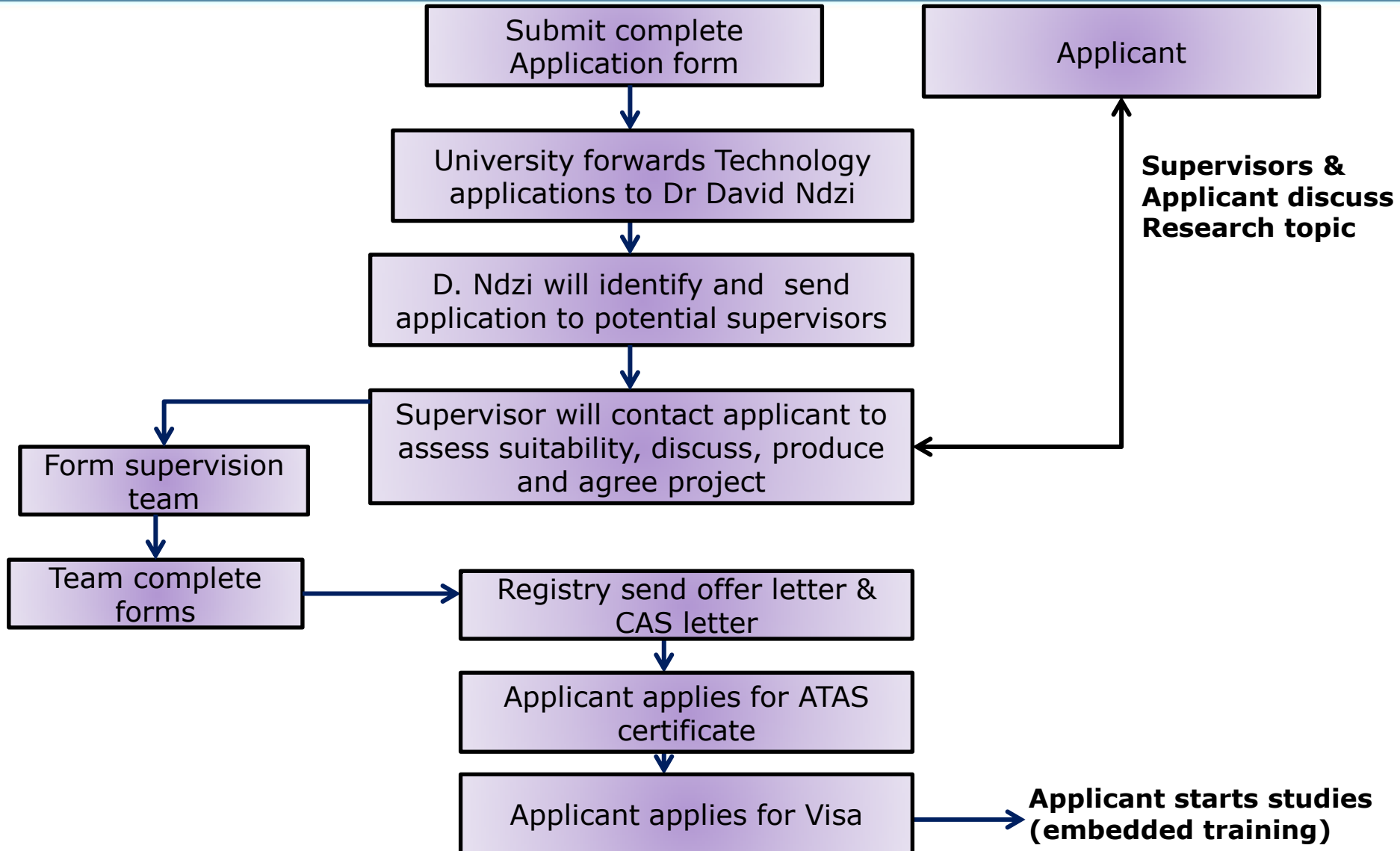




# Faculty of Technology PhD Applications

- Faculty of Technology does not require students to submit a research proposal
- Requirements:
  1. Submission of filled application form
  2. References (2)
  3. Proof of sponsorship
  4. 1 or 2 page description of research area applicant is interested in
  5. English Language qualification (IELTS 6.5)
  6. Certificates
  7. Transcript
  8. Curriculum vitae
  9. Sample of work e.g. Master degree Dissertation, if possible

# Faculty of Technology PhD Application & Processing Procedure





**Thank you**  
**Any questions?**



University of  
**Portsmouth**

[david.ndzi@port.ac.uk](mailto:david.ndzi@port.ac.uk)



# Tuition fees

Business Communication courses	£10,000
Fee Band 1	£11,000
Fee Band 2	£11,600
Fee Band 3 (Technology courses)	£12,500
MBA (AMBA accredited)	£18,000
MBA (with placement)	£20,200





# Faculty Student Support

- Support Structure
  - Student Computer Surgery
  - Electronics Surgery
  - Mechanical Engineering Surgery
  - Tutor Centre
  - Forums for each subject
  - Maths Café
  - Personal tutor
- Others
  - Student Placement





# Halls of residence

TEN modern and well-equipped Halls of Residence



James Watson Hall



Trafalgar Hall



Harry Law Hall



Margaret Rule Hall



Bateson Hall



Rees Hall



Burrell Hall



Langstone Flats



Trust Hall



QEQM Hall